

End View of Connection

Allowable Uplift Capacity = U

Allowable In-Plane Lateral Load Capacity = P1

Allowable Out-of-Plane Lateral Load Capacity = P2

Load Combination 1

U = 2530 lbs

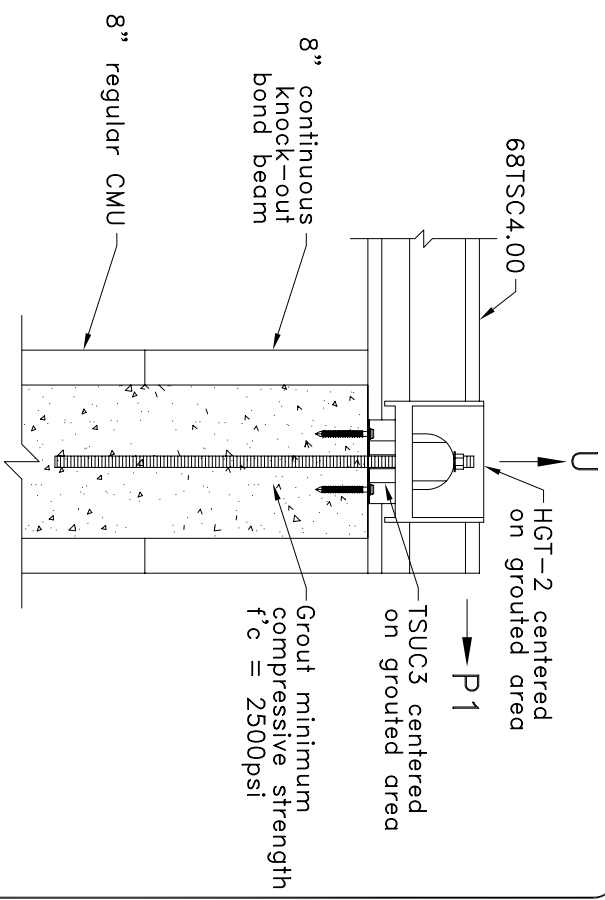
P1 = 700 lbs

Load Combination 2

U = 2530 lbs

P2 = 830 lbs

U and P1/P2 are in Combination



Side View of Connection

General Notes:

1. Refer to Simpson Strong-Tie literature and code approvals for proper installation procedures for SET epoxy anchors.
2. Minimum threaded rod length shall be determined by 12" (305mm) minimum embedment and at least three exposed threads above nut on threaded rod.
3. SDS = self-drilling tapping screw
4. Per manufacturer's code approval, the design values given above are for uncracked concrete only.
5. Reference ICC-ES ESR-1328 (Mar. 1, 2006, Revised Jan. 2007) for installation of Tapcon Concrete Screw Anchor.
6. Concrete anchor is not to be installed until concrete has reached the specified design strength.
7. TAPCON concrete anchor spacing is 2" (51mm) minimum. Fill outside holes of TSUC3 clip.
8. Attachment of second clip on opposite face of chord is identical to what is detailed.
9. Calculations are per the 2004 addendum to the 2001 AISI North American Specification for Cold-Formed Steel Structures.

TrusSteel®
An ITW Company

www.TrusSteel.com

Florida: 1950 Marley Drive / Haines City, FL 33844 / (800) 755-6001
Missouri: 13389 Lakefront Drive / Earth City, MO 63045 / (800) 326-4102
California: 8351 Rovana Circle / Sacramento, CA 95828 / (800) 877-3678

**Truss to Grouted CMU Bearing
For Uplift In Combination w/
Later Load, Using HGT-2 and
TSUC3**

ITW Building Components Group, Inc. shall not be responsible for any performance failure in a connection due to a deviation from this detail. Any variation from this detail shall be approved in advance by ITW Building Components Group, Inc.

Custom Detail:

TS-CD-TB-MA6-001

Date:

09/04/08

Custom Detail Category:

Truss-to-Bearing Connection